

State	Market	Address	City	Industrial/ Office/ Cold Storage	Availabilities (SF)		Clear Height	Listing Broker Contact	Broker Email
					Total	Minimum			
AZ	Southwest Phoenix	<a href="#">4901 W. Van Buren St.</a>	Phoenix	I	5,780	5,780	18'	Marc Hertzberg - Jones Lang LaSalle (602) 648-9219	<a href="mailto:marc.hertzberg@am.jll.com">marc.hertzberg@am.jll.com</a>
		<a href="#">4929 W. Van Buren St.</a>	Phoenix	I	74,642	37,321	24'	Marc Hertzberg - Jones Lang LaSalle (602) 648-9219	<a href="mailto:marc.hertzberg@am.jll.com">marc.hertzberg@am.jll.com</a>
		<a href="#">6111 W. Washington St. (Land/BTS)</a>	Phoenix	I	273,000	114,000	32'-36'	John Werstler - CBRE (602) 735-5504	<a href="mailto:john.werstler@cbre.com">john.werstler@cbre.com</a>
CA	Los Angeles	<a href="#">24760 S Main St.</a>	Carson	I	231,008	231,008	30'	John Repstad - Binswanger (213) 892-8881	<a href="mailto:jrepstad@raginc.com">jrepstad@raginc.com</a>
		<a href="#">2601 S. Malt Ave.</a>	Commerce	I	180,473	180,473	20'-22'	Dave Hess - Cushman & Wakefield (213) 955-6412	<a href="mailto:dave.hess@cushwake.com">dave.hess@cushwake.com</a>
		<a href="#">6100 Garfield Ave. (Land/BTS)</a>	Commerce	I	620,000	152,000	36'	Zac Sakowski - JLL (213) 239-6239	<a href="mailto:zac.sakowski@am.jll.com">zac.sakowski@am.jll.com</a>
		<a href="#">350 W. Manville St.</a>	Compton	I	50,000	50,000	24'	Brad Levin - Daum Commercial (310) 538-6728	<a href="mailto:brad.levin@daumcommercial.com">brad.levin@daumcommercial.com</a>
		<a href="#">675 W. Manville St.</a>	Compton	I	123,456	123,456	22'	Rooney Daschbach - Cushman & Wakefield (562) 276-1431	<a href="mailto:rooney.daschbach@cushwake.com">rooney.daschbach@cushwake.com</a>
		<a href="#">13169 Slover Ave.</a>	Fontana	I	184,755	69,720	32'	Chuck Belden - Cushman & Wakefield (909) 942-4640	<a href="mailto:chuck.belden@cushwake.com">chuck.belden@cushwake.com</a>
		<a href="#">13083 Slover Ave.</a>	Fontana	I	43,802	43,802	32'	Chuck Belden - Cushman & Wakefield (909) 942-4640	<a href="mailto:chuck.belden@cushwake.com">chuck.belden@cushwake.com</a>
		<a href="#">1990 S. Cucamonga Ave.</a>	Ontario	I	416,713	416,713	30'	Len Santoro - CBRE (909) 418-2158	<a href="mailto:len.santoro@cbre.com">len.santoro@cbre.com</a>
		<a href="#">4422 Airport Dr.</a>	Ontario	I	62,835	62,835	24'	Len Santoro - CBRE (909) 418-2158	<a href="mailto:len.santoro@cbre.com">len.santoro@cbre.com</a>
		<a href="#">1601 W. Mission Blvd.</a>	Pomona	I	751,528	7,338	12'-20'	John Repstad - Binswanger (213) 892-8881	<a href="mailto:jrepstad@raginc.com">jrepstad@raginc.com</a>
		<a href="#">9910 Nevada St. (Land/BTS)</a>	Redlands	I	425,940	425,940	32'	Jeff Smith - Lee & Associates (909) 373-2909	<a href="mailto:jsmith@lee-assoc.com">jsmith@lee-assoc.com</a>
CA	Bay Area	<a href="#">9425 Nevada St.</a>	Redlands	I	606,000	187,673	32'	Chuck Belden - Cushman & Wakefield (909) 942-4640	<a href="mailto:chuck.belden@cushwake.com">chuck.belden@cushwake.com</a>
		<a href="#">8024-8076 Central Ave.</a>	Newark	I/O	22,963	7,801	20'	Joe Kelly - CBRE (408) 453-7474	<a href="mailto:joe.kelly@cbre.com">joe.kelly@cbre.com</a>
FL	Southeast Florida	<a href="#">1001 Broken Sound Pkwy.</a>	Boca Raton	I/O	10,250	10,250	16'	Jeff Kelly - CBRE (561) 393-1621	<a href="mailto:jeffrey.kelly@cbre.com">jeffrey.kelly@cbre.com</a>
		<a href="#">1155 Broken Sound Pkwy.</a>	Boca Raton	I/O	42,563	11,351	16'	Jeff Kelly - CBRE (561) 393-1621	<a href="mailto:jeffrey.kelly@cbre.com">jeffrey.kelly@cbre.com</a>
		<a href="#">1225 Broken Sound Pkwy.</a>	Boca Raton	I/O	16,281	5,720	16'	Jeff Kelly - CBRE (561) 393-1621	<a href="mailto:jeffrey.kelly@cbre.com">jeffrey.kelly@cbre.com</a>
		<a href="#">1395 NW 17th Ave.</a>	Delray Beach	I/O	8,284	1,219	20'	Christopher Thomson - Cushman & Wakefield (561) 227-2020	<a href="mailto:christopher.thomson@cushwake.com">christopher.thomson@cushwake.com</a>
		<a href="#">430 S. Congress Ave.</a>	Delray Beach	I	41,334	9,013	24'	Jeff Kelly - CBRE (561) 393-1621	<a href="mailto:jeffrey.kelly@cbre.com">jeffrey.kelly@cbre.com</a>
		<a href="#">251 International Pkwy. (Sublet)</a>	Sunrise	I	178,791	178,791	40'	Brad Stitchberry - KTR Capital Partners (954) 421-0948	<a href="mailto:bstitchberry@ktrcapital.com">bstitchberry@ktrcapital.com</a>
		<a href="#">602 - 668 S. Military Trl.</a>	Deerfield Beach	I/O	22,967	1,843	16'	Tom Hotz - Butters Realty (954) 312-2415	<a href="mailto:tom@butters.com">tom@butters.com</a>
		<a href="#">674 - 692 S. Military Trl.</a>	Deerfield Beach	I	24,613	7,200	18'	Tom Hotz - Butters Realty (954) 312-2415	<a href="mailto:tom@butters.com">tom@butters.com</a>
		<a href="#">700 - 710 S. Military Trl.</a>	Deerfield Beach	I	18,111	18,111	18'	Tom Hotz - Butters Realty (954) 312-2415	<a href="mailto:tom@butters.com">tom@butters.com</a>
		<a href="#">712 - 734 S. Military Trl.</a>	Deerfield Beach	I	24,526	8,518	24'	Tom Hotz - Butters Realty (954) 312-2415	<a href="mailto:tom@butters.com">tom@butters.com</a>
		<a href="#">736 - 774 S. Military Trl.</a>	Deerfield Beach	I	15,325	15,325	24'	Tom Hotz - Butters Realty (954) 312-2415	<a href="mailto:tom@butters.com">tom@butters.com</a>
		<a href="#">776 - 858 S. Military Trl.</a>	Deerfield Beach	I/O	27,994	550	16'	Tom Hotz - Butters Realty (954) 312-2415	<a href="mailto:tom@butters.com">tom@butters.com</a>
		<a href="#">5555 Anglers Ave.</a>	Hollywood	O	9,277	1,000	16'	David Wigoda - Jones Lang Lasalle (954) 829-3737	<a href="mailto:david.wigoda@am.jll.com">david.wigoda@am.jll.com</a>
		<a href="#">3601-3613 N. 29th Ave.</a>	Hollywood	I	18,300	9,150	24'	David Wigoda - Jones Lang Lasalle (954) 829-3737	<a href="mailto:david.wigoda@am.jll.com">david.wigoda@am.jll.com</a>
		<a href="#">3850 N. 29th Ter.</a>	Hollywood	I	24,480	6,400	23'	David Wigoda - Jones Lang Lasalle (954) 829-3737	<a href="mailto:david.wigoda@am.jll.com">david.wigoda@am.jll.com</a>
		<a href="#">1901-1949 Tigertail Blvd.</a>	Hollywood	I	21,000	7,000	22'	David Wigoda - Jones Lang Lasalle (954) 829-3737	<a href="mailto:david.wigoda@am.jll.com">david.wigoda@am.jll.com</a>
		<a href="#">5553 Anglers Ave. (Bldg 4)</a>	Hollywood	I	18,560	8,000	21'	David Wigoda - Jones Lang Lasalle (954) 829-3737	<a href="mailto:david.wigoda@am.jll.com">david.wigoda@am.jll.com</a>
<a href="#">645 NW Enterprise Dr.</a>	Port St. Lucie	I	19,200	2,400	18'	Derrick Christenson - Christenson Commercial RE (772) 419-5076	<a href="mailto:derricksoldit@aol.com">derricksoldit@aol.com</a>		
<a href="#">651 NW Enterprise Dr.</a>	Port St. Lucie	I	16,896	1,536	18'	Derrick Christenson - Christenson Commercial RE (772) 419-5076	<a href="mailto:derricksoldit@aol.com">derricksoldit@aol.com</a>		
<a href="#">7655 Enterprise Dr.</a>	Riviera Beach	I	7,650	1,600	18'	Christopher Thomson - Cushman & Wakefield (561) 227-2020	<a href="mailto:christopher.thomson@cushwake.com">christopher.thomson@cushwake.com</a>		
<a href="#">7656 Byron Dr.</a>	Riviera Beach	I	21,715	1,592	18'	Christopher Thomson - Cushman & Wakefield (561) 227-2020	<a href="mailto:christopher.thomson@cushwake.com">christopher.thomson@cushwake.com</a>		
<a href="#">7540 Bivron Dr.</a>	Riviera Beach	I	104,640	104,640	32'	Christopher Thomson - Cushman & Wakefield (561) 227-2020	<a href="mailto:christopher.thomson@cushwake.com">christopher.thomson@cushwake.com</a>		
<a href="#">9439 W. Commercial Blvd.</a>	Tamarac	I	84,100	84,100	35'	Tom O'Loughlin - CBRE (954) 356-0468	<a href="mailto:tom.oloughlin@cbre.com">tom.oloughlin@cbre.com</a>		
<a href="#">1904 NW 97th Ave.</a>	Doral	I	102,899	43,680	22'	Brian Smith - Cushman & Wakefield (305) 533-2892	<a href="mailto:brian.smith@cushwake.com">brian.smith@cushwake.com</a>		

State	Market	Address	City	Industrial/ Office/ Cold Storage	Availabilities (SF)		Clear Height	Listing Broker Contact	Broker Email
					Total	Minimum			
FL	Southeast Florida	<a href="#">Beacon @ 97th Ave (Land/BTS)</a>	Doral	I	55,000	55,000	30'	Brian Smith - Cushman & Wakefield (305) 533-2892	<a href="mailto:brian.smith@cushwake.com">brian.smith@cushwake.com</a>
		<a href="#">Miami Int'l Distribution Center</a>	Doral	I	335,841	151,100	36'	Jose Juncadella - Fairchild Partners (305) 668-0620	<a href="mailto:jjuncadella@fairchildpartners.com">jjuncadella@fairchildpartners.com</a>
		<a href="#">Miami Int'l Distribution Center (Land/BTS)</a>	Doral	I	94,000	94,000	36'	Jose Juncadella - Fairchild Partners (305) 668-0620	<a href="mailto:jjuncadella@fairchildpartners.com">jjuncadella@fairchildpartners.com</a>
		<a href="#">Seneca North Industrial Park (Land/BTS)</a>	Pembroke Pines	I	36,300	36,300	30'	Rick Etner - Cushman & Wakefield (954) 771-0800	<a href="mailto:rick.etner@cushwake.com">rick.etner@cushwake.com</a>
FL	Tampa	<a href="#">4023 Tampa Rd.</a>	Oldsmar	I/O	30,564	9,564	20'	Alan Feldshue - Colliers Arnold (727) 442-7296	<a href="mailto:alan.feldshue@colliers.com">alan.feldshue@colliers.com</a>
		<a href="#">4025 Tampa Rd.</a>	Oldsmar	I/O	19,638	750	20'	Alan Feldshue - Colliers Arnold (727) 442-7296	<a href="mailto:alan.feldshue@colliers.com">alan.feldshue@colliers.com</a>
		<a href="#">4027 Tampa Rd.</a>	Oldsmar	I	46,000	16,000	22'	John Dunphy - Jones Lang LaSalle (813) 387-1312	<a href="mailto:JohnC.Dunphy@am.jll.com">JohnC.Dunphy@am.jll.com</a>
		<a href="#">4029 Tampa Rd. (Sublet)</a>	Oldsmar	I	94,000	18,000	22'	John Dunphy - Jones Lang LaSalle (813) 387-1312	<a href="mailto:JohnC.Dunphy@am.jll.com">JohnC.Dunphy@am.jll.com</a>
FL	Orlando	<a href="#">38 Skyline Dr.</a>	Lake Mary	I	60,500	25,000	32'	Bo Bradford - Southern Commercial (321) 281-8502	<a href="mailto:bbradford@southerncommercialre.com">bbradford@southerncommercialre.com</a>
GA	Atlanta	<a href="#">1500 Distribution Ct.</a>	Lithia Springs	I	35,533	35,533	24'	Chris Miller - NAI Brannen Goddard (404) 812-4084	<a href="mailto:cmiller@naibg.com">cmiller@naibg.com</a>
		<a href="#">1575 Distribution Ct.</a>	Lithia Springs	I	85,000	85,000	26'	Chris Miller - NAI Brannen Goddard (404) 812-4084	<a href="mailto:cmiller@naibg.com">cmiller@naibg.com</a>
		<a href="#">1650 Horizon Pky</a>	Buford	I	116,440	20,480	28'	Mark Hawks - CBRE (404) 504-5978	<a href="mailto:mark.hawks@cbre.com">mark.hawks@cbre.com</a>
IL	Chicago	<a href="#">200 S Mitchell Ct.</a>	Addison	I	152,200	57,000	22'	Jeff Fischer - NAI Hiffman (630) 317 - 0726	<a href="mailto:jfischer@hiffman.com">jfischer@hiffman.com</a>
		<a href="#">5619 W. 115th St.</a>	Alsip	I	170,563	170,563	28'	Larry Johnson - CB Richard Ellis (630) 573 - 7099	<a href="mailto:larry.johnson@cbre.com">larry.johnson@cbre.com</a>
		<a href="#">3557 Butterfield Rd.</a>	Aurora	I	88,114	30,000	30'	Brian Kling - Colliers International (847) 698 - 8223	<a href="mailto:brian.kling@colliers.com">brian.kling@colliers.com</a>
		<a href="#">7447 Central Ave.</a>	Bedford Park	I	62,500	62,500	21'	Steve Connolly - NAI Hiffman (630) 639-0642	<a href="mailto:sconnolly@hiffman.com">sconnolly@hiffman.com</a>
		<a href="#">595 Territorial Dr.</a>	Bolingbrook	I	67,904	33,745	28'	Terry Grapenthin - Cawley Chicago (630) 810-1160	<a href="mailto:tgrape@cawleychicago.com">tgrape@cawleychicago.com</a>
		<a href="#">290 Gerzevske Ln.</a>	Carol Stream	I	45,240	45,240	24'	Justin Lerner - Newmark Knight Frank Epic (847) 588 - 5665	<a href="mailto:jlerner@newmarkkfe.com">jlerner@newmarkkfe.com</a>
		<a href="#">513 Express Center Dr.</a>	Chicago	I	138,000	69,000	24'	Matt Mulvihill - CBRE (847) 706-4964	<a href="mailto:matt.mulvihill@cbre.com">matt.mulvihill@cbre.com</a>
		<a href="#">3100-3250 S. Central Ave.</a>	Cicero	I	220,685	10,134	14'-22'	Tom Condon - Colliers International (847) 698-8212	<a href="mailto:t.condon@colliers.com">t.condon@colliers.com</a>
		<a href="#">105 E. Oakton St.</a>	Des Plaines	I	100,227	100,227	23'	Matthew Stauber - Colliers International (847) 698-8236	<a href="mailto:matthew.stauber@colliers.com">matthew.stauber@colliers.com</a>
		<a href="#">801 Chase Ave.</a>	Elk Grove Village	I	6,383	6,383	17'	Rick Daly - Darwin Realty (630) 782-9520	<a href="mailto:rdaly@darwinrealty.com">rdaly@darwinrealty.com</a>
		<a href="#">1250 Arthur Ave.</a>	Elk Grove Village	I	96,382	41,491	20'	Chris Nelson - Lee & Associates of Illinois (773) 355-3011	<a href="mailto:cnelson@lee-associates.com">cnelson@lee-associates.com</a>
		<a href="#">3710 N. River Rd.</a>	Franklin Park	I	79,961	20,000	30'	Matt Mulvihill - CBRE (847) 706-4964	<a href="mailto:matt.mulvihill@cbre.com">matt.mulvihill@cbre.com</a>
		<a href="#">10800-10900 W. Belmont Ave.</a>	Franklin Park	I	66,417	66,417	16'-24'	Larry Goldwasser - Cushman & Wakefield (312) 470-2323	<a href="mailto:larry.goldwasser@cushwake.com">larry.goldwasser@cushwake.com</a>
		<a href="#">210 Windy Point Dr.</a>	Glendale Heights	I	36,617	36,617	30'	Britt Casey - Cushman & Wakefield (847) 518-3280	<a href="mailto:Britt.Casey@cushwake.com">Britt.Casey@cushwake.com</a>
		<a href="#">1100 Lakeside Dr.</a>	Gurnee	I	39,364	39,364	18'	Keith Puritz - CBRE (847) 572-1410	<a href="mailto:keith.puritz@cbre.com">keith.puritz@cbre.com</a>
		<a href="#">1820 Northwestern Ave.</a>	Gurnee	I	24,000	24,000	22'	Robin Stolberg Jones Lang LaSalle (312) 228-3218	<a href="mailto:robin.stolberg@am.jll.com">robin.stolberg@am.jll.com</a>
		<a href="#">1400-1456 Norwood Dr.</a>	Itasca	I	19,478	19,478	16'	Jeff Janda - Lee & Associates of Illinois (773) 355-3015	<a href="mailto:jjanda@lee-associates.com">jjanda@lee-associates.com</a>
<a href="#">2407 - 2457 W. North Ave.</a>	Melrose Park	I	205,998	49,763	30'	John Suerth - CBRE (847) 706-4929	<a href="mailto:john.suerth@cbre.com">john.suerth@cbre.com</a>		
<a href="#">1660 Wall Street</a>	Mt. Prospect	I	108,732	30,000	30'	Jason West - Cushman & Wakefield (847) 518-3210	<a href="mailto:jason.west@cushwake.com">jason.west@cushwake.com</a>		
<a href="#">3701-3749 N. 25th Ave.</a>	Schiller Park	I	7,360	7,360	16' & 18'	Tom Rodeno - Colliers International (847) 698-8231	<a href="mailto:tom.rodeno@colliers.com">tom.rodeno@colliers.com</a>		
<a href="#">10524 N. United Pkwy.</a>	Schiller Park	I	19,500	19,500	16'	Larry Goldwasser - Cushman & Wakefield (312) 470-2323	<a href="mailto:larry.goldwasser@cushwake.com">larry.goldwasser@cushwake.com</a>		
<a href="#">4136 N. United Pkwy.</a>	Schiller Park	I	107,040	107,040	22'	Larry Goldwasser - Cushman & Wakefield (312) 470-2323	<a href="mailto:larry.goldwasser@cushwake.com">larry.goldwasser@cushwake.com</a>		
<a href="#">4210 Transworld</a>	Schiller Park	I	16,200	16,200	16'	Larry Goldwasser - Cushman & Wakefield (312) 470-2323	<a href="mailto:larry.goldwasser@cushwake.com">larry.goldwasser@cushwake.com</a>		
<a href="#">4310 Transworld</a>	Schiller Park	I	23,000	23,000	18'	Larry Goldwasser - Cushman & Wakefield (312) 470-2323	<a href="mailto:larry.goldwasser@cushwake.com">larry.goldwasser@cushwake.com</a>		
<a href="#">4205-4321 N. United Pkwy.</a>	Schiller Park	I	5,000	5,000	16'	Larry Goldwasser - Cushman & Wakefield (312) 470-2323	<a href="mailto:larry.goldwasser@cushwake.com">larry.goldwasser@cushwake.com</a>		
<a href="#">10501 - 10505 Delta Pkwy.</a>	Schiller Park	I	19,470	19,470	16'	Larry Goldwasser - Cushman & Wakefield (312) 470-2323	<a href="mailto:larry.goldwasser@cushwake.com">larry.goldwasser@cushwake.com</a>		
<a href="#">10508 N. United Pkwy.</a>	Schiller Park	I	10,672	10,672	16'	Larry Goldwasser - Cushman & Wakefield (312) 470-2323	<a href="mailto:larry.goldwasser@cushwake.com">larry.goldwasser@cushwake.com</a>		
<a href="#">10509-10521 N. United Pkwy.</a>	Schiller Park	I	32,000	12,000	16'	Larry Goldwasser - Cushman & Wakefield (312) 470-2323	<a href="mailto:larry.goldwasser@cushwake.com">larry.goldwasser@cushwake.com</a>		

State	Market	Address	City	Industrial/ Office/ Cold Storage	Availabilities (SF)		Clear Height	Listing Broker Contact	Broker Email
					Total	Minimum			
IL	Chicago	<a href="#">4250 - 4306 N. United Pkwy.</a>	Schiller Park	I	108,040	27,010	21'	Larry Goldwasser - Cushman & Wakefield (312) 470-2323	<a href="mailto:larry.goldwasser@cushwake.com">larry.goldwasser@cushwake.com</a>
		<a href="#">16750 Vincennes Rd.</a>	South Holland	I	202,902	106,961	22' - 24'	Walter Murphy - Lee & Associates of Illinois (773) 355-3017	<a href="mailto:wmurphy@lee-associates.com">wmurphy@lee-associates.com</a>
		<a href="#">1601 Atlantic Dr.</a>	West Chicago	I	6,491	3,233	18'	Adam Johnson - NAI Hiffman (630) 317-0729	<a href="mailto:ajohnson@hiffman.com">ajohnson@hiffman.com</a>
		<a href="#">KTR - Crossroads DuPage (Land/BTS)</a>	West Chicago	I	210,000	30,600	30'	Kirk Armour - CB Richard Ellis (847) 706 - 4030	<a href="mailto:kirk.armour@cbre.com">kirk.armour@cbre.com</a>
NJ	New Jersey	<a href="#">275 Omar Ave.</a>	Avenel (12)	I	279,700	150,000	36'	Bill Waxman - CBRE (201) 712-5810	<a href="mailto:william.waxman@cbre.com">william.waxman@cbre.com</a>
		<a href="#">275 Omar Ave.</a>	Avenel (12)	C	111,950	111,950	40'	Bill Waxman - CBRE (201) 712-5810	<a href="mailto:william.waxman@cbre.com">william.waxman@cbre.com</a>
		<a href="#">3025 Woodbridge Ave.</a>	Edison	I	62,208	62,208	36'	Adam Citron - Jones Lang LaSalle (732) 590-4174	<a href="mailto:adam.citron@am.jll.com">adam.citron@am.jll.com</a>
		<a href="#">3001 Woodbridge Ave.</a>	Edison	I	393,000	86,000	27'	Adam Citron - Jones Lang LaSalle (732) 590-4174	<a href="mailto:adam.citron@am.jll.com">adam.citron@am.jll.com</a>
		<a href="#">600 Meadowlands Pkwy.</a>	Secaucus	I	9,600	2,400	24'	Brian Scheuer - Chaus Realty (201) 288-8818	<a href="mailto:bscheuerchausr@aol.com">bscheuerchausr@aol.com</a>
		<a href="#">600 Meadowlands Pkwy.</a>	Secaucus	O	25,652	1,190	n/a	Brian Scheuer - Chaus Realty (201) 288-8818	<a href="mailto:bscheuerchausr@aol.com">bscheuerchausr@aol.com</a>
		<a href="#">iPort 12 - 8003 Industrial Ave.</a>	Carteret	I	1,064,515	513,547	36'	Nate Demetsky - Jones Lang LaSalle (609) 672-3163	<a href="mailto:Nate.Demetsky@am.jll.com">Nate.Demetsky@am.jll.com</a>
NV	Las Vegas	<a href="#">3550 E. Post Rd.</a>	Las Vegas	I/O	4,000	4,000	16'-30'	Spencer Pinter - Colliers (702) 836-3776	<a href="mailto:spinter@lvcolliers.com">spinter@lvcolliers.com</a>
		<a href="#">3585 E. Patrick Ln.</a>	Las Vegas	I/O	17,800	4,385	16'-30'	Spencer Pinter - Colliers (702) 836-3776	<a href="mailto:spinter@lvcolliers.com">spinter@lvcolliers.com</a>
		<a href="#">3595 E. Patrick Ln.</a>	Las Vegas	I/O	48,514	5,267	16'-30'	Spencer Pinter - Colliers (702) 836-3776	<a href="mailto:spinter@lvcolliers.com">spinter@lvcolliers.com</a>
		<a href="#">3755 E. Post Rd.</a>	Las Vegas	I/O	39,929	39,929	16'-30'	Spencer Pinter - Colliers (702) 836-3776	<a href="mailto:spinter@lvcolliers.com">spinter@lvcolliers.com</a>
		<a href="#">6275 S. Pearl St.</a>	Las Vegas	I/O	27,362	11,000	16'-30'	Spencer Pinter - Colliers (702) 836-3776	<a href="mailto:spinter@lvcolliers.com">spinter@lvcolliers.com</a>
		<a href="#">6295 S. Pearl St.</a>	Las Vegas	I/O	37,578	4,800	16'-30'	Spencer Pinter - Colliers (702) 836-3776	<a href="mailto:spinter@lvcolliers.com">spinter@lvcolliers.com</a>
		<a href="#">3655 E. Patrick Ln.</a>	Las Vegas	I/O	11,703	5,104	16'-30'	Spencer Pinter - Colliers (702) 836-3776	<a href="mailto:spinter@lvcolliers.com">spinter@lvcolliers.com</a>
		<a href="#">6180 S. Pearl St.</a>	Las Vegas	I/O	21,600	21,600	16'-30'	Spencer Pinter - Colliers (702) 836-3776	<a href="mailto:spinter@lvcolliers.com">spinter@lvcolliers.com</a>
		<a href="#">3650 E. Post Rd.</a>	Las Vegas	I/O	11,661	11,661	16'-30'	Spencer Pinter - Colliers (702) 836-3776	<a href="mailto:spinter@lvcolliers.com">spinter@lvcolliers.com</a>
		<a href="#">6155 S. Sandhill Rd.</a>	Las Vegas	I/O	20,728	6,050	16'-30'	Spencer Pinter - Colliers (702) 836-3776	<a href="mailto:spinter@lvcolliers.com">spinter@lvcolliers.com</a>
		<a href="#">6275 S. Sandhill Rd.</a>	Las Vegas	I/O	15,000	15,000	16'-30'	Spencer Pinter - Colliers (702) 836-3776	<a href="mailto:spinter@lvcolliers.com">spinter@lvcolliers.com</a>
		<a href="#">6255 S. Sandhill Rd.</a>	Las Vegas	I/O	4,800	4,800	16'-30'	Spencer Pinter - Colliers (702) 836-3776	<a href="mailto:spinter@lvcolliers.com">spinter@lvcolliers.com</a>
		<a href="#">6445 Montessori St.</a>	Las Vegas	I/O	71,678	71,678	30'	Mike Hillis & Susan Borst - CW (702) 688-6915	<a href="mailto:sborst@comre.com">sborst@comre.com</a>
NV	Reno	<a href="#">Eagle Valley Industrial Center (Land/BTS)</a>	McCarran	I	566,875	275,000	32'-36'	Eric Bennett - CBRE (775) 823-6963	<a href="mailto:eric.bennett@cbre.com">eric.bennett@cbre.com</a>
OH	Columbus	<a href="#">5650 Greenpoint Dr. North</a>	Groveport	I	75,000	75,000	32'	Michael Mullady - CBRE (614) 430-5030	<a href="mailto:michael.mullady@cbre.com">michael.mullady@cbre.com</a>
PA	Harrisburg	<a href="#">3700 Industrial Rd.</a>	Harrisburg	I	209,110	209,110	30'	Joe McDermott - CBRE (610) 251-5107	<a href="mailto:joe.mcdermott@cbre.com">joe.mcdermott@cbre.com</a>
		<a href="#">3700 Industrial Rd.</a>	Harrisburg	C	178,479	82,682	30'	Joe McDermott - CBRE (610) 251-5107	<a href="mailto:joe.mcdermott@cbre.com">joe.mcdermott@cbre.com</a>
		<a href="#">3700 Industrial Rd.</a>	Harrisburg	Truck Maint.	15,100	15,100	20'	Joe McDermott - CBRE (610) 251-5107	<a href="mailto:joe.mcdermott@cbre.com">joe.mcdermott@cbre.com</a>
PA	Carlisle	<a href="#">950 Centerville Rd.</a>	Newville	I	570,000	300,000	32'	Michael Hess - CBRE (717) 540-2705	<a href="mailto:michael.hess@cbre.com">michael.hess@cbre.com</a>
TN	Nashville	104 Challenger Rd.	Portland	I	300,000	60,000	30'	John Ward - Cassidy Turley (615) 301-2834	<a href="mailto:john.ward@cassidyturley.com">john.ward@cassidyturley.com</a>
		<a href="#">1125 Vaughn Dr.</a>	Portland	I	504,000	504,000	32'	John Ward - Cassidy Turley (615) 301-2834	<a href="mailto:john.ward@cassidyturley.com">john.ward@cassidyturley.com</a>
TX	Dallas	5401 N. Riverside Dr. (Sublet)	Ft. Worth	I	658,692	250,000	40'	Paul Whitman - JLL (214) 438-6280	<a href="mailto:paul.whitman@am.jll.com">paul.whitman@am.jll.com</a>
TX	Houston	<a href="#">14430-14440 JFK Blvd.</a>	Houston	I/O	56,000	13,440	24'	Justin Robinson Stream Realty Partners (713) 300-0304	<a href="mailto:jrobinson@streamrealty.com">jrobinson@streamrealty.com</a>
WA	Seattle	<a href="#">20024 87th Avenue South</a>	Kent	I	144,000	144,000	24'	Matt Wood - Kidder Mathews (206) 248-7292	<a href="mailto:mwood@kiddermathews.com">mwood@kiddermathews.com</a>
		<a href="#">19802 87th Avenue South</a>	Kent	I	91,200	43,200	24'	Matt Wood - Kidder Mathews (206) 248-7292	<a href="mailto:mwood@kiddermathews.com">mwood@kiddermathews.com</a>
		<a href="#">8609-8633 S 208th St.</a>	Kent	I	89,438	4,800	22'	Matt Wood - Kidder Mathews (206) 248-7292	<a href="mailto:mwood@kiddermathews.com">mwood@kiddermathews.com</a>
		<a href="#">20201 87th Avenue South</a>	Kent	I	57,600	57,600	30'	Matt Wood - Kidder Mathews (206) 248-7292	<a href="mailto:mwood@kiddermathews.com">mwood@kiddermathews.com</a>
		<a href="#">20411 87th Avenue South</a>	Kent	I	43,200	43,200	30'	Matt Wood - Kidder Mathews (206) 248-7292	<a href="mailto:mwood@kiddermathews.com">mwood@kiddermathews.com</a>
		<a href="#">20413 87th Avenue South</a>	Kent	I	28,800	28,800	30'	Matt Wood - Kidder Mathews (206) 248-7292	<a href="mailto:mwood@kiddermathews.com">mwood@kiddermathews.com</a>
		<a href="#">8661 S 208th St.</a>	Kent	I	39,067	39,067	16'	Matt Wood - Kidder Mathews (206) 248-7292	<a href="mailto:mwood@kiddermathews.com">mwood@kiddermathews.com</a>

State	Market	Address	City	Industrial/ Office/ Cold Storage	Availabilities (SF)		Clear Height	Listing Broker Contact	Broker Email
					Total	Minimum			
WA	Seattle	<a href="#">20848 84th Avenue South</a>	Kent	I	36,233	36,233	24'	Matt Wood - Kidder Mathews (206) 248-7292	<a href="mailto:mwood@kiddermathews.com">mwood@kiddermathews.com</a>
		<a href="#">20014 85th Avenue South</a>	Kent	I	36,000	36,000	24'	Matt Wood - Kidder Mathews (206) 248-7292	<a href="mailto:mwood@kiddermathews.com">mwood@kiddermathews.com</a>
		<a href="#">20413 89th Avenue South</a>	Kent	I	32,400	32,400	30'	Matt Wood - Kidder Mathews (206) 248-7292	<a href="mailto:mwood@kiddermathews.com">mwood@kiddermathews.com</a>
		<a href="#">8435 South 208th St.</a>	Kent	I	26,864	26,864	22'	Matt Wood - Kidder Mathews (206) 248-7292	<a href="mailto:mwood@kiddermathews.com">mwood@kiddermathews.com</a>
		<a href="#">19815 85th Avenue South</a>	Kent	I	24,750	24,750	24'	Matt Wood - Kidder Mathews (206) 248-7292	<a href="mailto:mwood@kiddermathews.com">mwood@kiddermathews.com</a>
		<a href="#">19821 87th Avenue South</a>	Kent	I	18,000	18,000	24'	Matt Wood - Kidder Mathews (206) 248-7292	<a href="mailto:mwood@kiddermathews.com">mwood@kiddermathews.com</a>
		<a href="#">21040 84th Avenue South</a>	Kent	Retail	3,280	3,280	N/A	Matt Wood - Kidder Mathews (206) 248-7292	<a href="mailto:mwood@kiddermathews.com">mwood@kiddermathews.com</a>
WI	Wisconsin	<a href="#">11100 W. Silver Spring Rd.</a>	Milwaukee	I	127,400	28,286	22' - 24'	Samuel Dickman Jr. - The Dickman Company (414) 271-6100	<a href="mailto:sam-jr@dickmanrealestate.com">sam-jr@dickmanrealestate.com</a>

**KTR Asset Management Contacts**

**Steve Butte - Partner - National**

sbutte@ktrcapital.com (484) 530-1843

**Britt Sanders - Business Development - National**

bsanders@ktrcapital.com (212) 710-5076

**Bob Andrews - Senior Vice President - CA, AZ, WA**

bandrews@ktrcapital.com (213) 784-3656

**Kevin Apel - Vice President - Southern CA, AZ, WA**

kapel@ktrcapital.com (213) 784-4429

**Renee Carroll - Asset Manager - NV**

rroll@ktrcapital.com (702) 605-6508

**John Clowney - Vice President - GA, TX**

jclowney@ktrcapital.com (919) 900-8323

**Al Corr - Senior Vice President - PA, NJ, CFL**

acorr@ktrcapital.com (484) 530-1821

**Marty Edmondson - Vice President - IL, OH**

medmondson@ktrcapital.com (847) 737-4841

**Cane Napolitano - Southeast FL**

cnapolitano@ktrcapital.com (954) 354-0249

**Steve Pron - Senior Vice President - Midwest, NV**

spron@ktrcapital.com (484) 530-1851

**Brad Stitchberry - Vice President - Southeast FL**

bstitchberry@ktrcapital.com (954) 354-0290

**Rob Turcott - Vice President - IL, WI**

rturcott@ktrcapital.com (847) 737-4843

1660 WALL STREET | MOUNT PROSPECT | ILLINOIS  
LAKE CENTER CORPORATE PARK



FOR LEASE

NEW  
CONSTRUCTION



### BUILDING FACTS & FEATURES:

- 108,732 SF
- Divisible to 30,000 SF
- Office To-Suit
- 30' Clear Height
- 19 Exterior Docks (expandable)
- 2 Drive-In-Doors
- 16 Trailer Parking Stalls
- 168 Car Parking Stalls
- 50' x 46' Bay Size
- ESFR Sprinkler
- High Efficiency HVAC Units
- T-5 Lighting w/ Motion Sensors
- Class 6B Tax Incentive
- Securable Truck Court
- Business Park Setting
- Pace Bus Service
- Immediate Occupancy
- \$6.95 PSF Net Rental Rate



JASON WEST, SIOR, *Senior Director*  
847.518.3210 | [jason.west@cushwake.com](mailto:jason.west@cushwake.com)

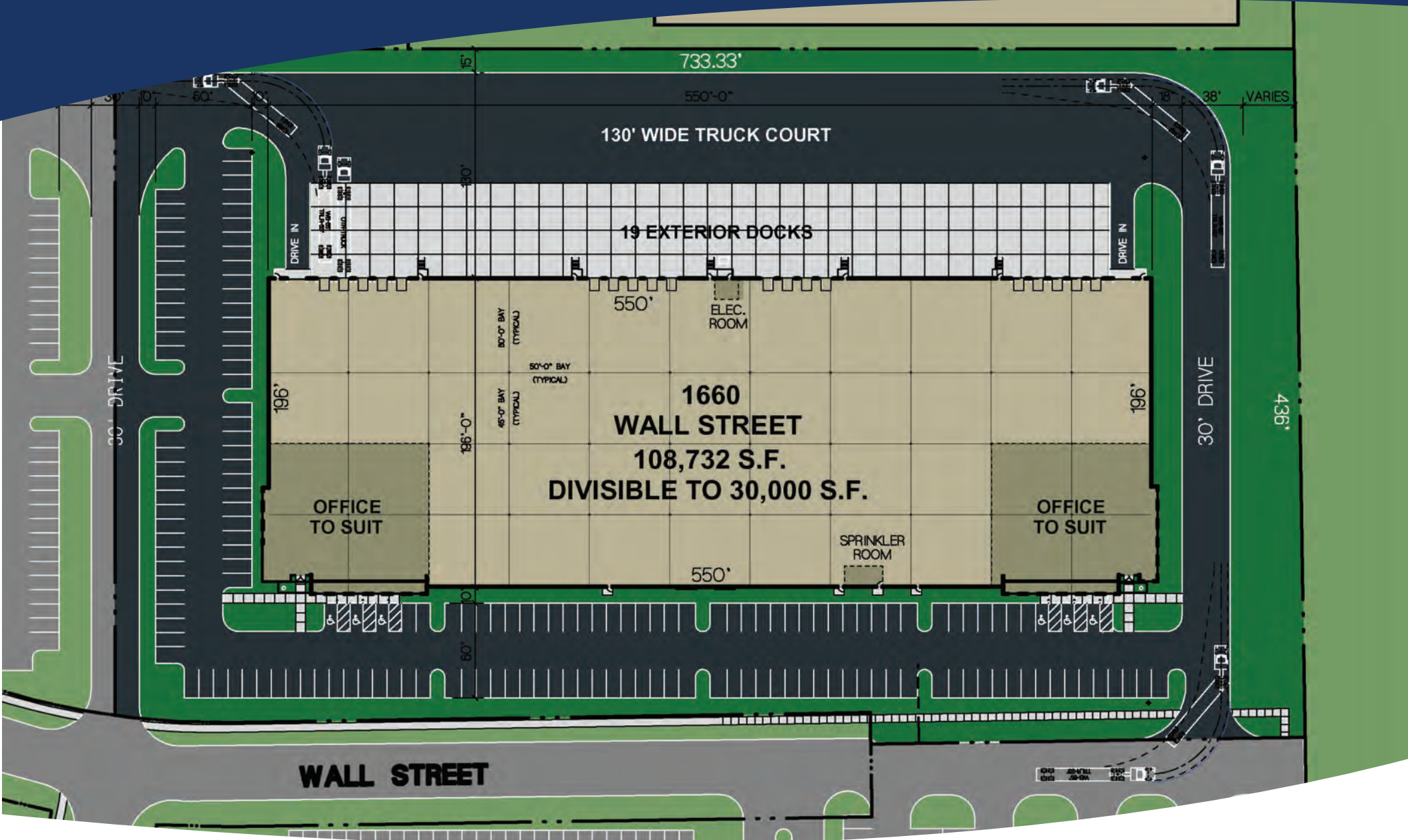
SEAN HENRICK, SIOR, CCIM, *Director*  
847.518.3215 | [sean.henrick@cushwake.com](mailto:sean.henrick@cushwake.com)

AL CARUANA, *Director*  
847.720.1326 | [al.caruana@cushwake.com](mailto:al.caruana@cushwake.com)



# 1660 WALL STREET | MOUNT PROSPECT | ILLINOIS

## LAKE CENTER CORPORATE PARK



JASON WEST, SIOR, *Senior Director*  
847.518.3210 | jason.west@cushwake.com

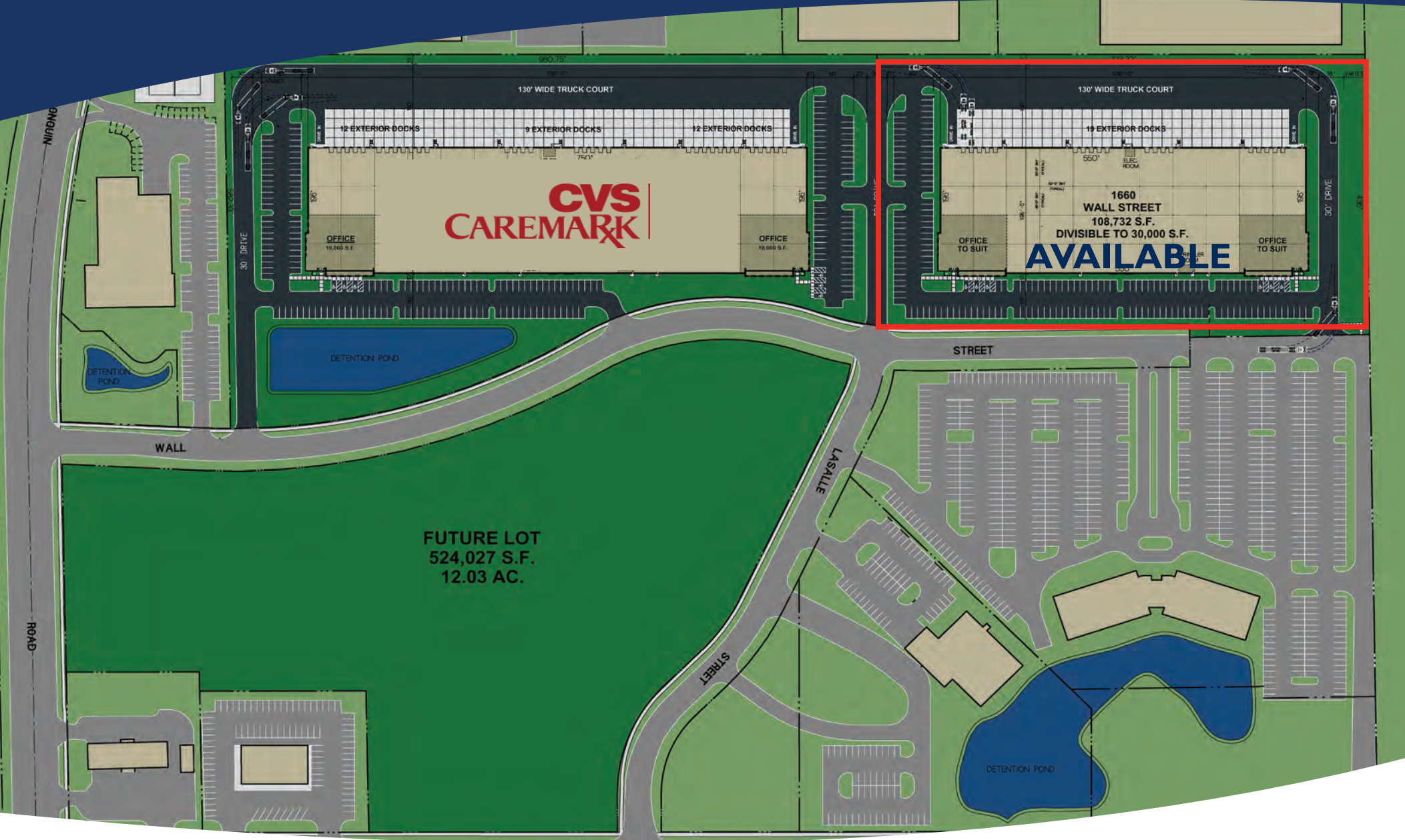
SEAN HENRICK, SIOR, CCIM, *Director*  
847.518.3215 | sean.henrick@cushwake.com

AL CARUANA, *Director*  
847.720.1326 | al.caruana@cushwake.com



# 1660 WALL STREET | MOUNT PROSPECT | ILLINOIS

## LAKE CENTER CORPORATE PARK



JASON WEST, SIOR, *Senior Director*  
847.518.3210 | [jason.west@cushwake.com](mailto:jason.west@cushwake.com)

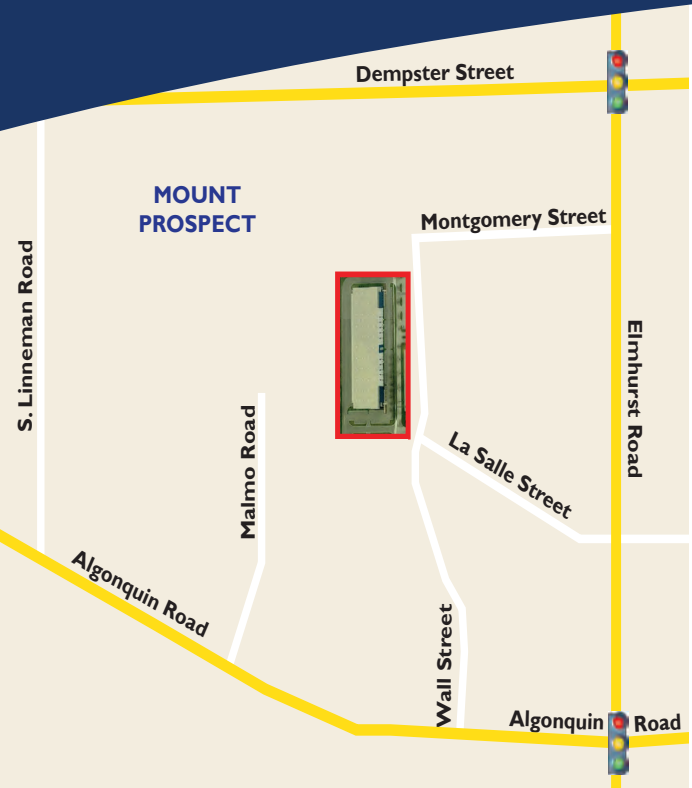
SEAN HENRICK, SIOR, CCIM, *Director*  
847.518.3215 | [sean.henrick@cushwake.com](mailto:sean.henrick@cushwake.com)

AL CARUANA, *Director*  
847.720.1326 | [al.caruana@cushwake.com](mailto:al.caruana@cushwake.com)



# 1660 WALL STREET | MOUNT PROSPECT | ILLINOIS

## LAKE CENTER CORPORATE PARK



**LOCATION! LOCATION! LOCATION!**

- Close to I-90 Interchange at Elmhurst Road
- Two Miles from O'Hare Airport
- Direct Access to I-355 & Northwest Suburbs
- Express PACE Bus Service to River Road CTA Station



JASON WEST, SIOR, *Senior Director*  
847.518.3210 | jason.west@cushwake.com

SEAN HENRICK, SIOR, CCIM, *Director*  
847.518.3215 | sean.henrick@cushwake.com

AL CARUANA, *Director*  
847.720.1326 | al.caruana@cushwake.com

